

Balmain

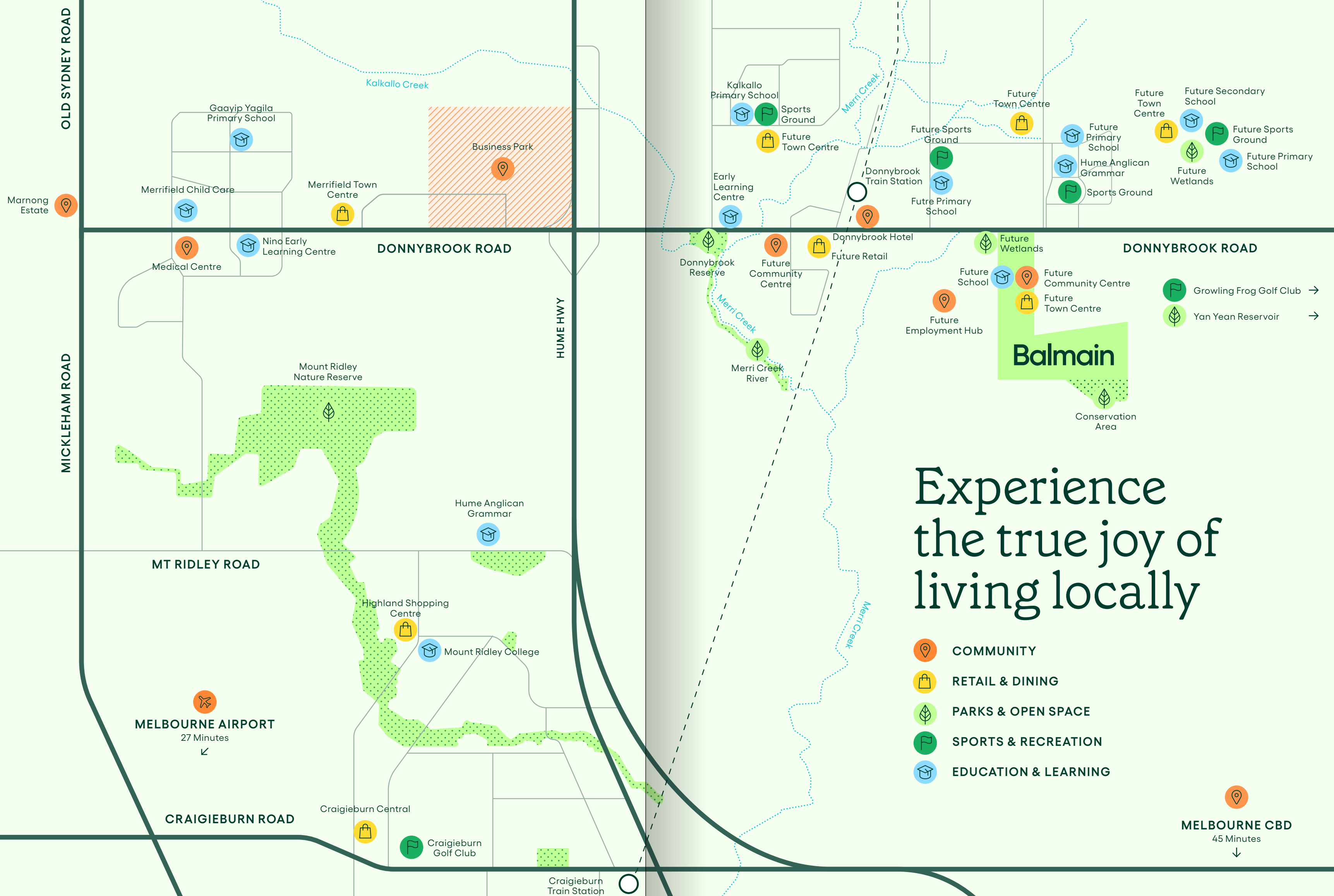
Stage 1 Pre-Sale



Balmain

By any measure, the Balmain masterplan is well conceived; its thoughtful amenity, generous green spaces, and wide, bicycle-friendly streets reflect a deep understanding of modern family living, the elements of wellbeing, and the joy of community.

Set for life.



Balmain

Experience
the true joy of
living locally

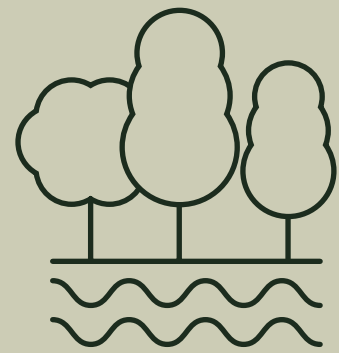
-  COMMUNITY
-  RETAIL & DINING
-  PARKS & OPEN SPACE
-  SPORTS & RECREATION
-  EDUCATION & LEARNING

MELBOURNE AIRPORT
27 Minutes
←

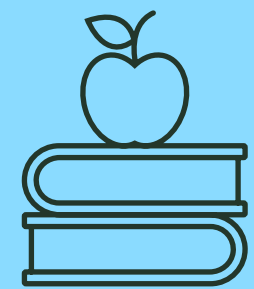
MELBOURNE CBD
45 Minutes
↓

Be it your first home, family home or forever home, at Balmain you'll be set for life.

A habitat for native wildlife this serene, lushly landscaped environment provides for walking and exercise, or the simple enjoyment of being immersed in nature.

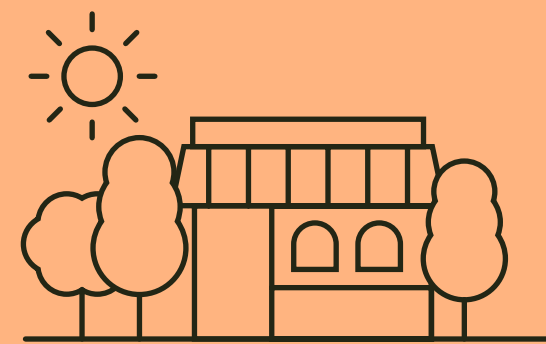


Wetlands



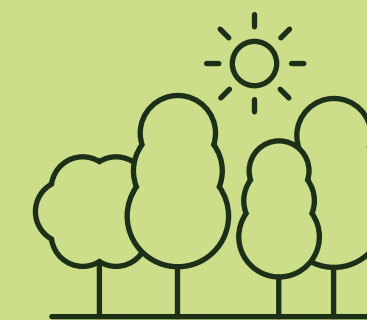
Learning & Education

Balmain's school will be—at most—a five minute stroll from your front door.



Town Centre

The town centre, with scope for full-line supermarket and numerous specialty shops will be just a short walk from every home.



Parklands

Lushly planted and designed for active enjoyment, our parks will include a covered BBQ area and a range of junior play equipment, and sports-related features.



liveatbalmain.com.au